

# 2024

Newsletter



## Creating Lasting Impact Through Innovation: Together We Can



[www.giminstitute.org/](http://www.giminstitute.org/)



# Foreword



As we reflect on 2024, it is impossible not to be inspired by the collective strides we've made in advancing innovation. **This year was a testament to the strength of our global community** and our shared commitment to democratizing innovation across industries, geographies, and sectors. From **expanding into new geographies** such as Indonesia, Spain, India, and Bermuda to **launching innovative initiatives like AKAIO**, a revolutionary AI-driven innovation platform, GIMI continues to prove that innovation knows no boundaries. Every partnership, certification, program, and initiative represents a step toward our vision of enabling individuals and organizations to unlock their potential and reach new heights; including our collaboration with PETRONAS, Rio Tinto, Hyundai, Toyota, Bank of Africa, Warba

Bank, training individuals on innovation standards, methodologies, and tools.

Yet, as remarkable as this year has been, **it is only the beginning**. As we step into 2025, we focus on formalizing our preeminence in innovation standards and methodology, building on our rich heritage from ADL/Monitor and MIT/Harvard. With **ISO accreditation** on the horizon, the **scaling of GIMI-ISO Audits**, the expansion of our thought leadership through **Centers of Excellence**, and the **new edition of Global Innovation Science Handbook** we are set to redefine the standards of innovation management. These milestones will not only strengthen our foundation but also enable us to deliver even greater impact for our partners, members, and the communities we serve.

What excites us most is **the emergence of strong GIMI thought leaders across regions**, amplifying the impact of innovation in diverse industries and communities. As we step into the new year, let us embrace the challenges and opportunities ahead with boldness, creativity, and a relentless drive to make a difference.

To our partners, members, and innovators worldwide: thank you for being part of this journey. Together, we are creating a movement that transforms ideas into impact and sets a new standard for what is possible.  
**Together we can!**

Warm regards,

**Dr. Hitendra Patel**  
CEO, Global Innovation Management Institute



# Dear Innovator,



As 2024 comes to a close, we want to take a moment to reflect on an incredible year.

This year has been one of growth, innovation, and meaningful partnerships—all made possible by your unwavering support.

Before we look ahead to what's next, let's reflect on our collective achievements over the past 12 months:

## GIMI in the numbers



**18,000**  
Certifications Provided



**32** Partners



**200** New Members



**34** Award Winners



**250+** Award Applications  
*in only 1-2 months*



**41** GISH Second Edition Authors



**110+**  
Global Partners

**But that's not all!**  
**We experienced significance**  
**growth in 2024...**



# Network

## Partnerships



Discover how GIMI is expanding its global reach through strategic partnerships.

We highlight our **partners' achievements** in delivering solutions that create lasting value across industries and regions.



Learn more about what transpired during our **partner meetings** and how we provided **support** to equip them with the tools, strategies, and resources needed to achieve sustainable growth in their respective fields.



Our partnerships with **PETRONAS** and **PMI** are paving the way for innovation leadership.

These partnerships reflect GIMI's dedication to driving organizational growth and leading the advancement of innovation.

## Memberships



Explore the **latest additions** to GIMI's community of innovators.

This section highlights new corporates, universities, and professional members joining us in shaping the future of innovation through education and collaboration.



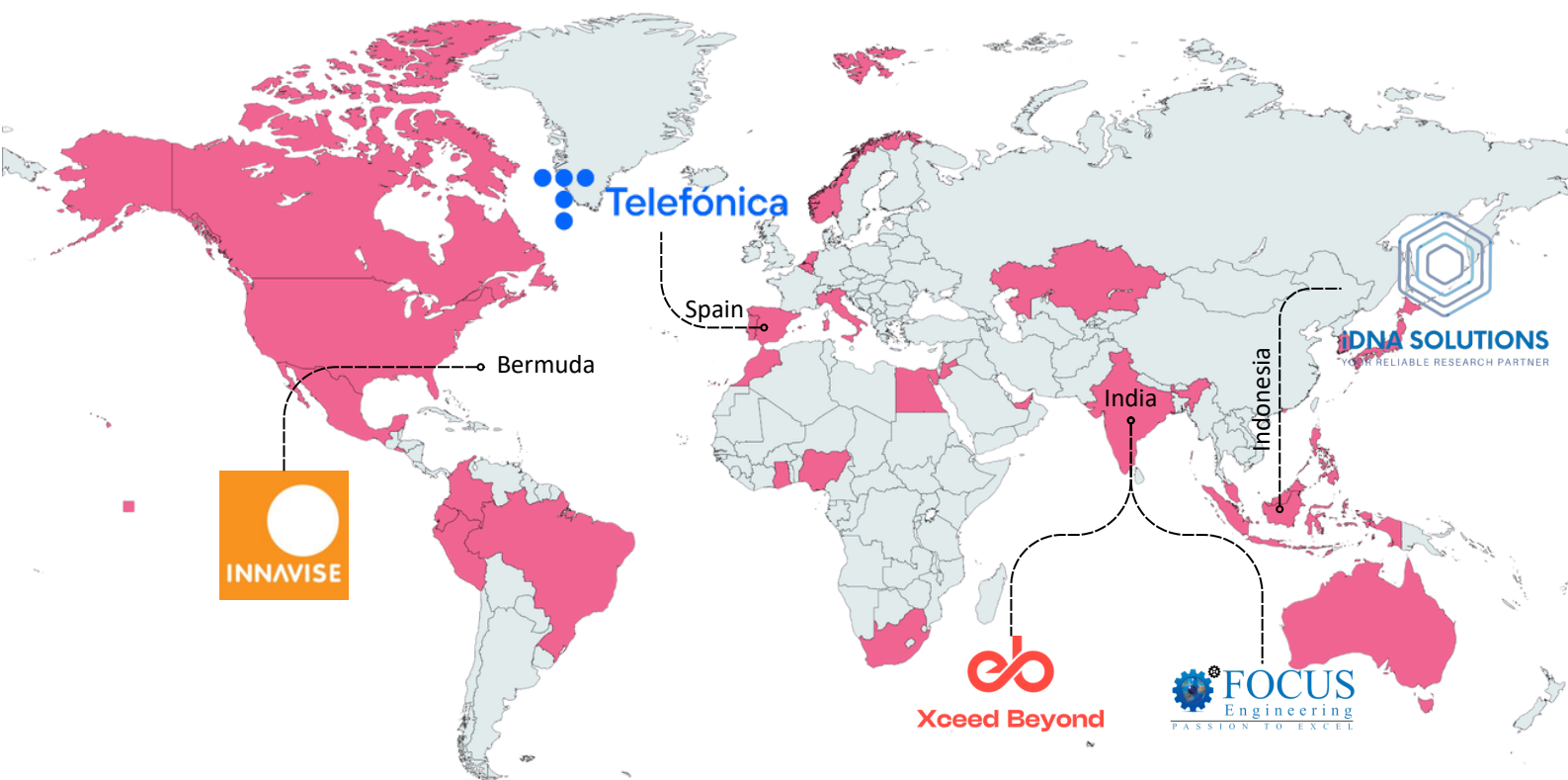


# We grew our network exponentially



Our network now proudly includes **32 certified partners** and **110+ global partners**, working across continents to drive transformative change.

Across the globe, partnerships with **iDNA Solutions** in Indonesia, **Innavise** in Bermuda, and **Xceed Beyond** in India extended our reach across Southeast Asia, Europe, Middle East, and India. Additionally, we established a strategic partnership with **Telefónica**, solidifying our presence in Spain.



**Dr. Dina Dellyana**  
Founder & Managing Partner  
iDNA Solutions

## Indonesia 🇮🇩

**iDNASolutions** is a research and consulting company specialized in innovation, customer behavior, and digital transformation.



**Anup Kiran**  
Founder & CEO  
Xceed Beyond

## India 🇮🇩

**Xceed Beyond** is your trusted partner & catalyst for change. We harness innovation to transform opportunities & constraints into scalable solutions.



**Wanda Richardson**  
Founder & CEO  
Innavise

## Bermuda 🇧🇲

**Innavise** is a future-forward, boutique consultancy based in Bermuda, specializing in business consulting and innovation management solutions.



**Prashant Nasery**  
Founder & CEO  
Focus Engineering

## India 🇮🇩

**Focus Engineering** is a people & business transformation architect that helps organizations in performance improvement.



**Carlos Marin**  
Head of Innovation

## Spain 🇪🇸

**Telefónica** is today one of the largest telecommunications companies in the world in terms of market capitalization and number of customers.

## Join a network of certified innovators

Become a Certified Partner (CTP) and offer training on Innovation Management to executives and leaders around the world. Not just that – grow your credibility as an innovator and meet potential clients, partners, and collaborators!

[Become a Partner](#)



# CTPs of the Year (2024)



This year's honorees represent excellence in innovation leadership **across diverse regions and industries**, exemplifying the commitment to advancing growth and impactful change.



**Kent Matla**  
Chairperson  
AUSTRALIAN  
INNOVATION  
MANAGEMENT  
INSTITUTE



**Tony Carbonero**  
Partner  
SN  
BX  
SANDBOX



**Mohab Anis**  
Co-Founder  
innovety  
unleash your innovation



**David Fernández**  
CEO & Founder  
TDM  
Internacional



**Dina Dellyana**  
Founder  
IDNA SOLUTIONS  
YOUR RELIABLE RESEARCH PARTNER



**David Fernández**  
CEO & Founder  
TDM  
Internacional



**Carolina Chitiva**  
Executive Director  
IXL COLOMBIA



**David Tesone**  
Director  
IXL COLOMBIA



**Rafael Lemaitre**  
Partner  
SIAPARTNERS



**Adi Alon**  
Managing Director  
IXL CENTER



**Enrique Mesones**  
President & Board Member  
APESOFT  
ASOCIACIÓN PERUANA  
DE SOFTWARE, TECNOLOGÍAS  
Y ECONOMÍA DIGITAL

Our **Certified Training Partners** played a pivotal role in advancing government innovation in regions such as the **Middle East, Peru, Australia, Colombia, El Salvador, Philippines, Ghana, and Mexico**.

Through training programs, innovation audits, and certifications, we empowered **Fortune 500 companies** across **Colombia, USA, Norway, Australia, Canada, Philippines, Malaysia, Brazil, and Morocco** to drive sustainable growth.

We also supported SMEs in regions such as **USA, Colombia, El Salvador**, and the **Middle East** and partnered with universities in **Mexico, Peru, USA, South Korea, Italy, and Malaysia** to address global challenges through innovation.

Our partners have truly gone above and beyond, bringing together thousands of innovators and driving sustainable growth and impactful collaboration worldwide!

Congratulations to **IXL Colombia, Apesoft, and TDM Internacional** for their incredible contributions to the **LATAM Innovation Podcast** and other impactful initiatives in 2024. From Innova LATAM in Colombia to events in El Salvador, Dubai, and the Innovation Ranking Event, these collaborations united innovators across the globe, sparking meaningful change.

[Become a GIMI Partner](#)

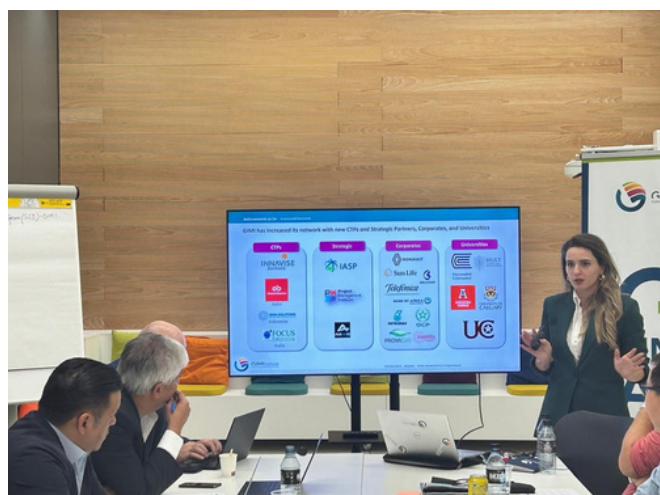




# 2024 GIMI Partners Meeting



We hosted our annual partners meeting in **Barcelona** and discussed key topics such as **ISO**, **GIMI preeminence**, and expanding our network through **Centers of Excellence** and **AKAIO**.





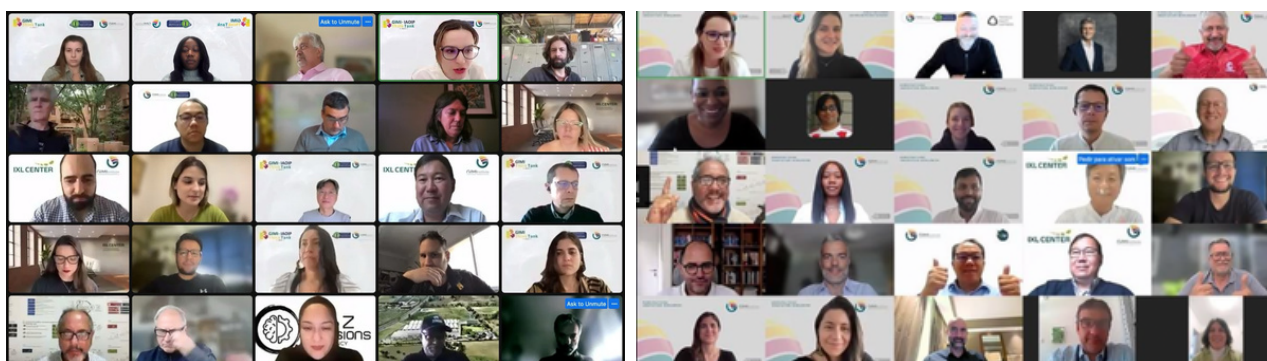
# Support to our Partners' Network



We have held **networking sessions** with partners globally, **building their capacities** on Innovation Management, Design Thinking and Future Foresight and **one-on-one sessions** supporting them to grow their markets.

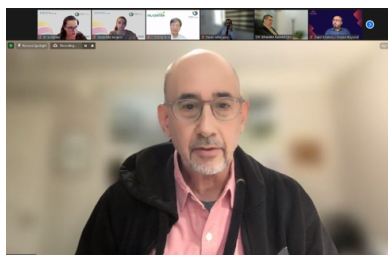
## Networking

Quarterly meetings, webinar sessions

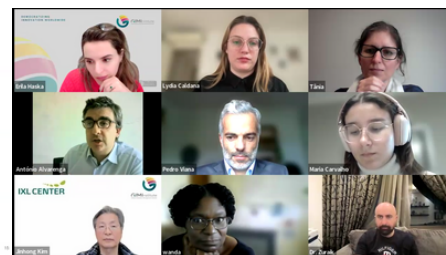


## Capability Building

CIP, CCIO, Become A Facilitator, Design Thinking Trainers, Future Foresight Trainers



S4Futures Framework



## One-on-One Sessions

Strategic Growth, Sales, Proposal Writing







# Corporate Partnerships



We take pride in fostering meaningful collaborations that drive innovation and organizational excellence. By working alongside leading corporations, financial institutions, and academic partners worldwide, **we empower our community to create sustainable and impactful solutions across industries.**

We've collaborated with a diverse array of corporate clients and organizations across industries and geographies, including global corporations such as **Rio Tinto, OCP, Petronas, Hyundai, Toyota**, and as well as financial institutions like **Bank of Africa, Bank Muscat**, and **Warba Bank**.



# University Partnerships

GIMI has also collaborated with multiple educational institutions worldwide including **USM Graduate School of Business, Institute Teknologi Bandung, Tecnológico de Monterrey, IIM Lucknow, SUPSI University**, and **University Trento**.





## Spotlight on PETRONAS: A Partnership Shaping the Future of Energy Innovation

We are thrilled to announce our new corporate partnership with **PETRONAS**, one of the biggest companies in Southeast Asia and the 9th largest producer of oil and gas!

Over the course of an intensive week, we had the privilege of training **25 Master Trainers from innovation fraternities** on GIMI standards and methodology, further equipping them to drive impactful innovation from within.

We're proud to have certified a remarkable group of **Innovation Champions** who will lead the charge in championing innovation at **PETRONAS**, helping shape the future of the organization and the energy industry!







# Fostering collaboration between innovation and project management



Global Innovation Management Institute and Project Management Institute (PMI) are exploring meaningful exchanges of insights between our communities.



GIMI and the Project Management Institute (PMI) are exploring an exciting collaboration to redefine the intersection of innovation and project management. Recent thought-provoking sessions by **Lenka Pincot** and **Hitendra Patel** have laid a strong foundation for this partnership.

Lenka Pincot shared **PMI's vision** of **empowering organizations to thrive** in an ever-changing business landscape, underscoring the critical role of innovation in fostering agility, resilience, and antifragility within organizations, emphasizing power skills like problem-solving and strategic thinking.

In turn, GIMI's Hitendra Patel inspired global PMI members with his actionable strategies for innovative leadership. He emphasized **making growth a strategic imperative**, asking bold questions about future opportunities, and embracing non-linear approaches to innovation. Together, these insights set the stage for a powerful collaboration aimed at equipping leaders to navigate complexities, drive impactful outcomes, and shape the future of business.

[Become a GIMI Partner](#)



# New memberships



In 2024, we continued growing the world's largest professional community for innovators. With over **18,000 members worldwide**, we're shaping the future through innovation and collaboration. We proudly welcomed **160 new professional and student members**, reflecting the expanding reach of our innovation network.

We renewed the **University of Charleston's Academia Membership**, strengthening our ongoing collaboration in fostering innovative education.



We also welcomed **Sandoq Al Watan LLC, Ilunion Hotels, Makkah Chamber of Commerce, Continental University, and Tec Monterrey.**



Their addition strengthens our mission to expand **innovation-focused education** and collaboration across the **hospitality and commerce** sectors.



## 160 New Professional and Student Members

We were also able to onboard **160 new professional and student members**, emphasizing our commitment to nurturing the next generation of innovation leaders.



[Become a Member](#)



# Products

## Certifications and Assessments



Learn how our **certification programs** and **Innovation Potential Assessments** equip individuals and teams with the skills and insights to drive meaningful change.



## Innovation Tools



Explore the latest in transformative solutions like **AKAIO** built to unlock new opportunities and accelerate innovation across industries.

## Impactful Initiatives



Discover how we're making a difference through partnerships like the **LISC Digital Growth Accelerator**.







# Certification Programs

GIMI is building a global community of innovation leaders.

**2,000+**  
Individuals Certified

We delivered masterclasses where we certified:



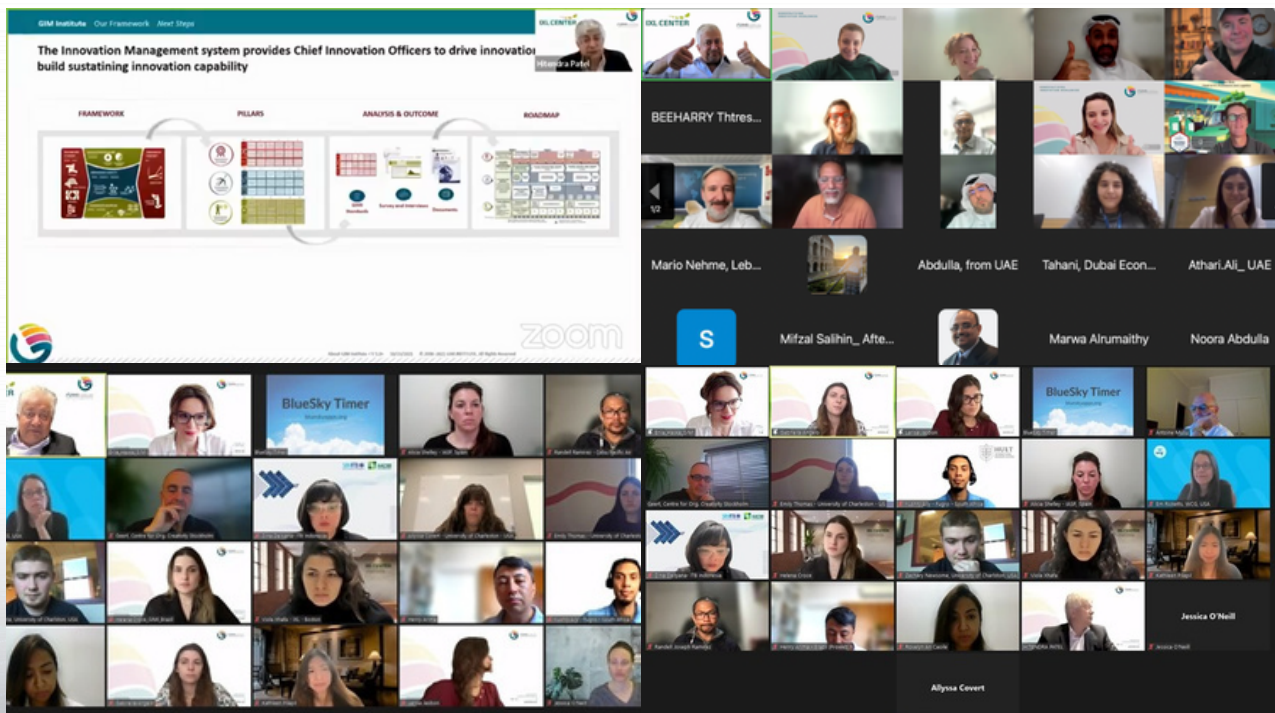
**132 Innovation Professionals**



**314 Innovation Officers**



**21 Future Foresight Practitioners**



**Be part of a global network of innovators.**

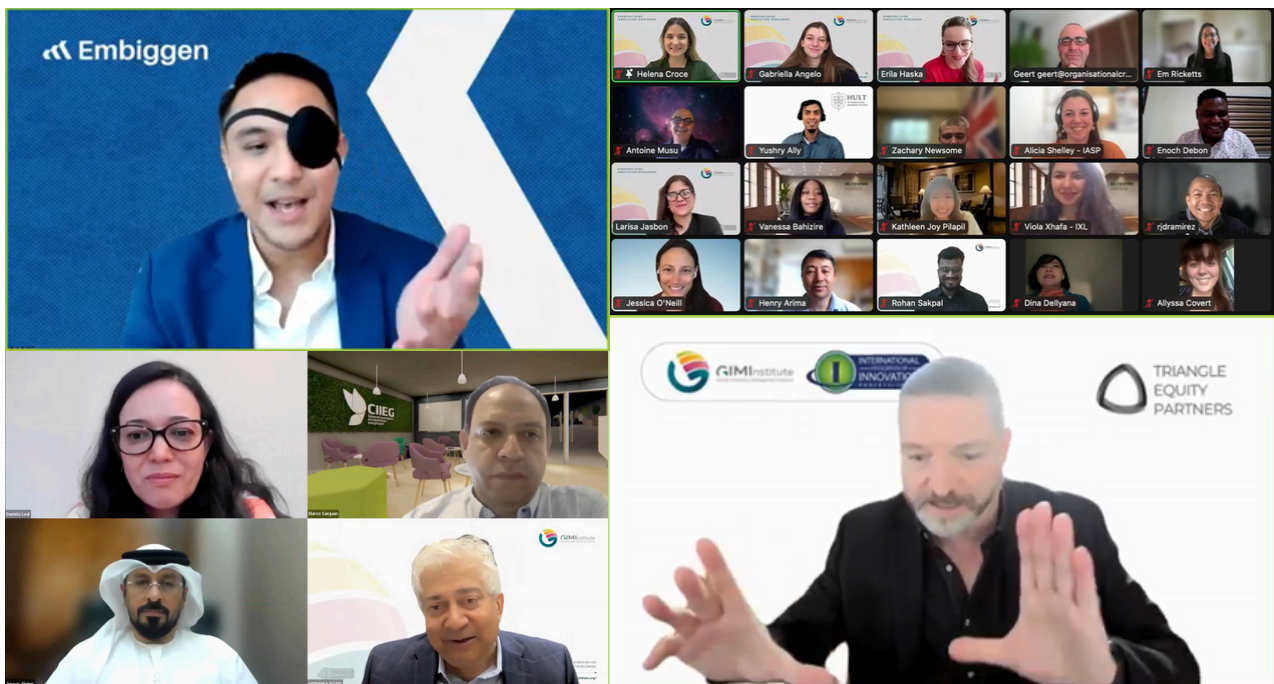
**Get Certified Today**



# Innovation Potential Assessments



Beyond certifications, GIMI conducted over **20 innovation coaching sessions** and facilitated **34 Innovation Potential Assessments**, helping teams and organizations unlock their potential and build a culture of innovation.



The **GIMI Innovation Potential Assessment (IPA)** is a powerful tool designed for innovation managers and HR directors to evaluate their team's innovation mindset and know-how, identify drivers and barriers to innovation, and strategically position individuals for success.

**Conduct an IPA for your team or organization today.**

**Conduct Innovation Potential Assessment**

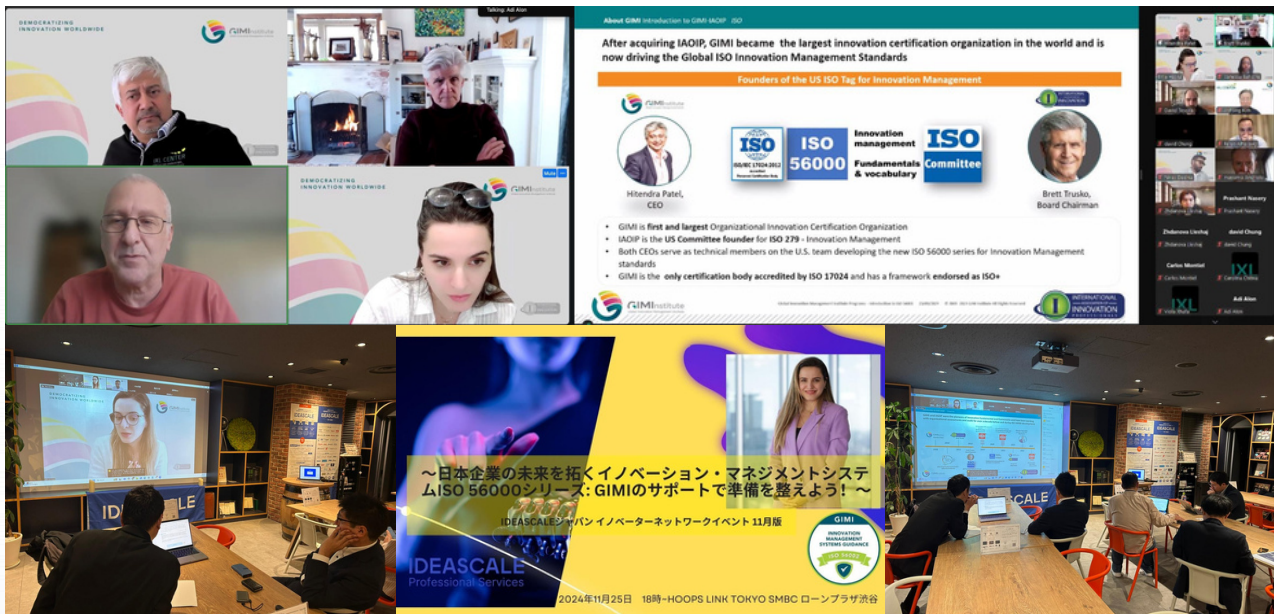




# GIMI-ISO Audits: Driving Preeminence in Global Innovation Standards

The **GIMI-ISO Compliance Audit**, launching in **2025**, is designed for organizations seeking to align with internationally recognized ISO standards and ensure compliance with the latest **ISO 56001:2024** requirements. This audit provides a structured, reliable path to meeting globally recognized innovation standards.

The GIMI Audit is tailored for organizations **looking to achieve preeminence** in their industry through advanced innovation management strategies. GIMI offers specialized guidance for **identifying breakthrough opportunities**, **managing risks**, and **setting the foundation** for sustained leadership in innovation.



GIMI is the **only certification body accredited by ISO 17024**, with a framework endorsed as ISO+. This unique position allows us to provide organizations with the tools to not only comply with ISO standards but also to differentiate themselves as preeminent leaders in innovation management.

Stay tuned for more updates and upcoming webinars as we continue to set the global standard for innovation management.

**Align with globally recognized innovation standards.**

**Conduct your GIMI-ISO Audit**





# The first AI Innovation Ecosystem Platform



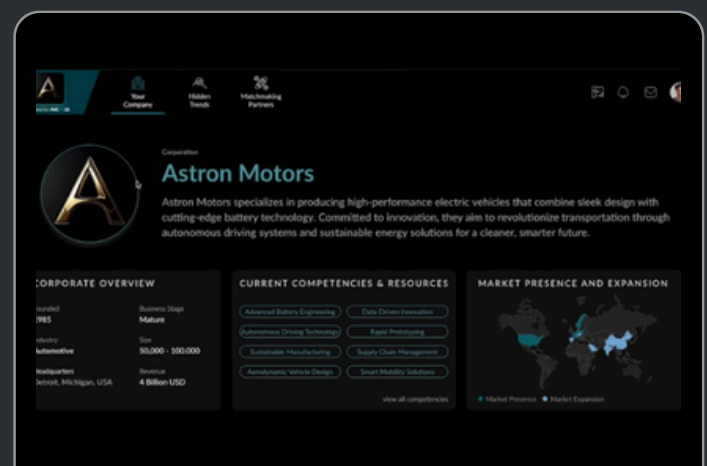
## Transforming Innovation with AI

In partnership with **The Kyra AI**, we launched **AKAIO**, a revolutionary online platform that leverages the power of artificial intelligence (AI) to transform how organizations approach innovation — bigger, bolder, better, faster, and cheaper.

What sets AKAIO apart is its proprietary approach to innovation. Unlike traditional AI tools, AKAIO combines high-quality data, proprietary algorithms, and a cutting-edge **LLM-powered recommendation engine** to identify unanticipated, unique growth opportunities with GIMI methodology at its core.

Key features of AKAIO include **Hidden Trends Mapping** to uncover future opportunities, Innovation Opportunities discovery, advanced matchmaking to build best-in-class teams, seamless project management, and an **Ecosystem Radar** to detect patterns and stay ahead of the curve.

With AKAIO, we're not just enhancing innovation, we're redefining it, and this partnership reflects our shared commitment to creating ecosystems that **accelerate growth and innovation across industries**.



**Get ahead of the curve. Use our Ecosystem Radar to find new innovation solutions!**

**Express Your Interest**

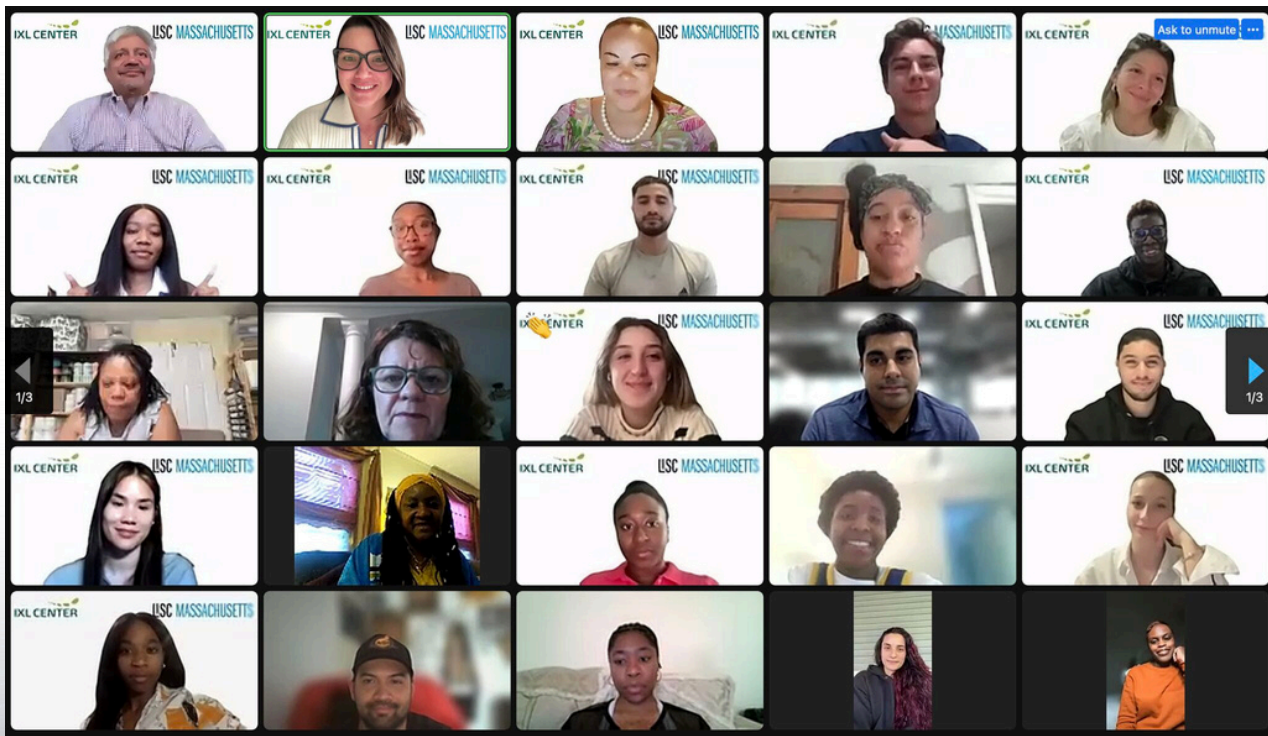


# Making social impact with LISC Massachusetts



In partnership with the IXL Center and LISC Massachusetts, in 2024, we hosted four cohorts of the **LISC Digital Growth Accelerator Program**, reaching a significant milestone with the program's 10th cohort.

This social impact initiative has brought together **300 SMEs** and **over 500 students**, working collaboratively to strengthen core business operations, identify new growth opportunities, drive sales, and ultimately double the value of participating SMEs across Massachusetts.



**LISC Digital  
Growth Accelerator**

Join us in our mission to help  
100,000 SMEs achieve 2x growth

[Be Part of the Next Cohort](#)



# Thought Leadership



## Celebrating Innovation

From the **GIMI Innovation Awards** to **Innova Latam 2024**, we bring together visionary leaders and recognize groundbreaking contributions that shape the future of industries.



## Global Discussions and Events



Through initiatives like the **GCIO Annual Meeting** and our **Think Tank Webinars**, we provide a platform for experts to share knowledge and spark meaningful dialogue on innovation trends and strategies.

## Insightful Resources

We're getting ready for the second edition of the **Global Innovation Science Handbook (GISH2)** and our **Centers of Excellence Speakers Series**.







# 2024 GIMI Innovation Awards

## 1st Edition

*Celebrating excellence in innovation*



This year, we launched the **1st Edition of the GIMI Innovation Awards**, celebrating individuals and organizations dedicated to advancing innovation and making a lasting difference.

With hundreds of inspiring applications, we were honored to recognize **34 winners across 12 categories** spanning the private, public, and social sectors.

The award ceremony, hosted on **November 6th** at LaSalle University in Barcelona, was a true gathering of minds and hearts.



Missed it out? Check out our [awards video](#) and [ceremony highlights](#)!



This initiative embodies GIMI's mission to democratize innovation and shine a light on those driving change. We can't wait to see what next year brings - prepare for the **2025 GIMI Innovation Awards Call for Applications** opening soon!

Stay tuned for the **2025 GIMI Innovation Awards** call for application, opening soon!

Visit the Innovation Awards page





# GCIO Annual Meeting

This November, we had the privilege of participating in the annual **GCIO meeting**, a dynamic event filled with insightful discussions, impactful presentations, and strategic planning for an ambitious 2025.

Hosted by our institutional member representative, **Professor Josep Piqué** from **La Salle Technova**, the event featured an inspiring presentation on Orchestrating Innovation Ecosystems with the Quadruple Helix Model.

This was possible thanks to GCIO founding members and ambassadors, **Dr. Hazza Alneaimi** and the DGEP team, **Hitendra Patel** from IXL Center, **Truls Berg** from Open Innovation Lab of Norway, **Josep Piqué** from LaSalle Technovate, **Vincent Tobias** from Ayala Corporation, **Kent Matla** from AIMI, and **Carolina Duran** from Building Markets for their invaluable contributions.







# Innova Latam 2024:

Shaping the future of Innovation Leadership

An incredible event that brought together over **1,300 participants** and showcased **20 remarkable speakers**.

**Innova Latam 2024** is the premier corporate innovation event in **Latin America**, organized to bring together visionary leaders, industry experts, and innovators from across the region and beyond.

This one-of-a-kind gathering creates the perfect space for meaningful discussions and **strategic networking**, tackling the unique challenges and exciting opportunities businesses face.

This year, the event brought together over **1,300 participants**, both in person and online, and featured **20 inspiring speakers** who shared their expertise on leadership, innovation, and sustainability.

After the event, attendees were energized and ready to embrace the future!

Check out the [event highlights](#) and follow us on [social media](#).





# We are paving the path to Innovation Management through Thought Leadership

In 2024, GIMI hosted **47 Think Tank Webinars**, attracting over 1,000 participants from across the globe who learned about the latest innovation trends, such as GenAI, Fintech, technology, and energy transition.

Highlights included **Dawn Gregory's discussion on adopting AI across various industries**, **Ms Ginbee Go's** exploration of how a 172-year-old institution in the financial industry stays relevant through technology, and **Rafael Serpa's** session on Technology along the Green Hydrogen Value Chain.

The series also tackled organizational innovation, with topics such as "the intersection of project management and innovation," "The success and failure of innovation labs and incubators," and "ISO 56008 and practical innovation metrics".

These are just a few examples of the incredible sessions we hosted this year, with other inspiring speakers who shared their expertise with our community.



The GIMI Think Tank Webinars are cornerstones of our mission, offering innovators the tools, knowledge, and community to drive **meaningful change**.

We're excited to continue these dynamic discussions in the coming year!



**Never miss an update about GIMI Think Tank Webinars!**

Follow us on our social media pages:







# Leading the future with our Centers of Excellence



At GIMI, we are committed to staying at the forefront of innovation.

Our Centers of Excellence, which are centered around **Generative AI, Energy Transition, FoodTech, Longevity, and Banking**, serve as digital hubs for cutting-edge insights across high-growth sectors.

GIMI and **FoodTech Latam** have joined forces to create a visionary network focused on next-generation food solutions.

This partnership will see GIMI implement innovation management standards within the FoodTech Latam ecosystem, enhancing Brazil's role in global food production.



Looking ahead to 2025, we are excited to introduce **Thematic Months** for each Center of Excellence, starting in January with a focus on **Generative AI**.

These months will spotlight breakthrough developments, foster deeper collaboration, and engage our network in transformative discussions based on each Center of Excellence.

Together, we aim to drive impactful solutions and knowledge-sharing, ensuring innovation reaches every corner of the world.



## Join GEN AI Speaker Series on Jan 2025!

Register to secure your spot





# Get the best insights into innovation

We published 5 in-depth articles on learning and mastering innovation. These resources are part of our mission to make innovation accessible and impactful!

[Check them out](#)



## GIMI Speakers Bureau Launch

We can connect you with some of the world's leading industry experts. Our platform brings together **experienced professionals** who are passionate about sharing their knowledge and insights.

Whether planning a conference, workshop, or special event, we'll help you find the perfect speaker to captivate your audience and make your event **unforgettable!**

[Find a speaker](#)



# We are launching GISH 2nd edition to be your guide to mastering innovation

The **Global Innovation Science Handbook (GISH)**, now in its **second edition**, is the ultimate resource for innovation leaders and practitioners worldwide.

Recognized with the prestigious **PROSE Award**, this comprehensive guide dives deep into cutting-edge **methodologies, strategies, and tools** that drive meaningful innovation.

From exploring creative ideation techniques to mastering innovation management metrics, GISH2 brings together contributions from global experts across academia, industry, and consulting.

Whether you're seeking to inspire your team, enhance your organization's innovation capacity, or stay ahead of trends, GISH2 is your essential companion for navigating the future of innovation.

**Stay tuned for updates and insights from this groundbreaking publication in 2025!**



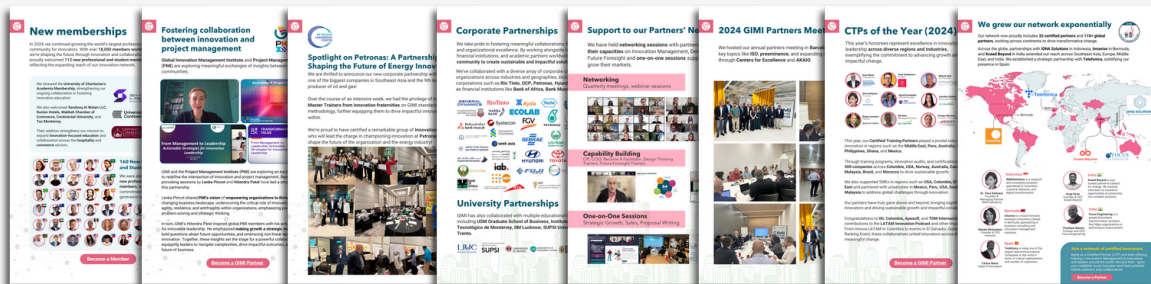
# Looking Forward to 2025

As we reflect on the milestones of 2024, we're excited to continue building a global innovation ecosystem in 2025.

Together, we aim to unlock new opportunities, drive impactful solutions, and shape the future of industries worldwide.



We look back at our growing network of partners and collaborators driving innovation globally.



We give you more tools and resources to empower your organizations.



We continue to provide you with expert knowledge and strategies to navigate the challenges of tomorrow.





# Meet the Team



**Hitendra Patel**  
CEO



**Erila Haska**  
COO & Partnership  
Director



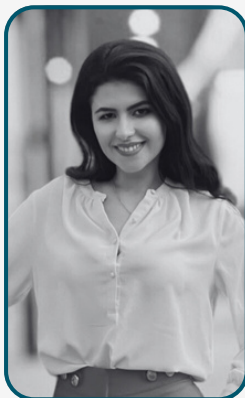
**Larisa Jasbon Fadul**  
Product Design



**Nirav Dedhia**  
Organization  
Certification



**Vanesa Bahizire**  
Project  
Coordinator



**Viola Xhafa**  
CoEs & Speakers  
Bureau



**Carlos Montiel**  
LMS &  
Certificates



**Gabriela Angelo**  
Memberships &  
Community



**Helena Croce**  
Business  
Development

## Join Our Community

Become part of a vibrant network of innovators, leaders, and organizations dedicated to making a difference.

[Become a Member](#)

## Partner With Us

We're always looking to partner with like-minded organizations to bring bold ideas to life.

[Become a Partner](#)

## Become a Certified Chief Innovation Officer

Get certified with our new CCIO course starting February.

[Learn More](#)

[www.giminstitute.org](http://www.giminstitute.org)



110 Cambridge Street  
Cambridge, MA, USA 02141



**GIMI**Institute  
Global Innovation Management Institute